



# EDUCATION CATALOGUE

VOL. 1 EDUCATIONAL CATALOGUE

**DI OFFICE DESIGN**

Phone: 03 9372 2777

Email: [sales@diofficedesign.com.au](mailto:sales@diofficedesign.com.au)

39 Stubbs Street, Kensington VIC 3031

[www.diofficedesign.com.au](http://www.diofficedesign.com.au)



## EDUCATION IS IMPORTANT AND SO IS EDUCATIONAL FURNITURE.

D.I. Office Design has been in operation since 1995 and has over 50 years combined experience. Our success comes from establishing a strong client base, enhancing our clients' business by creating a better work environment which are both functional and flexible.

At DI Office Design, we pride ourselves on the quality and range of furniture we have on offer.

This catalogue is the first edition of our Education Furniture Range. The perfect insight to what D.I Office Design can provide. Our range covers all areas of education from Early Learning to Higher Education. Our tailored range of furniture aids in the growth and performance of all students big and small, creating comfortable and focused spaces by implementing carefully selected pieces to inspire those ready to learn.

To fulfill all requirements and assistance, contact a D.I. Representative.

## CONTENTS

1	<b><u>TABLES</u></b>
2 - 5	Student Tables
6	Teachers Desks
7 - 8	Meeting Tables
9	<b><u>CHAIRS</u></b>
10 - 12	Student Stackable
13 - 14	Student
15 - 18	Accent
19 - 22	Task Seating

23 - 26	Stools
27 - 28	Ottomans
29	<b><u>STORAGE</u></b>
30 - 32	Classroom
33	Lockers
34	<b><u>THINK TANK</u></b>
35 - 36	Whiteboards
37	Presentation
38 - 39	Innovation



# TABLES

TEACHER

STUDENT



## STUDENT TABLES



## STUDIO

Top Sizes Options:	1200W x 600D
	1500W x 750D
	1800W x 750D
	1800W x 900D
Table Height:	730mm



## BAR HIGH

Top Size:	1800W x 900D
Table Height:	1050mm



## FOLDA FOLDING TABLE

Top Sizes Options:	1500W x 750D
	1800W x 750D
	1800W x 900D
Table Height:	730mm



## EASY FLIP TABLE

Top Sizes Options:	1500W x 750D
	1800W x 750D
Table Height:	750mm



## EDGE FOLDING TABLE

Top Size:	2400W x 1000D
Table Height:	743mm





**SINGLE EXAM TABLE**

Top Size:	600W X 600D
Table Height:	720mm



**SINGLE SKOOLA**

Top Size Options:	600W x 600D 700W x 600D
Table Height:	*Adjustable* 525 - 805mm



**DOUBLE SKOOLA**

Top Sizes Options:	1200W x 600D 1300W x 600D
Table Height:	*Adjustable* 525 - 805mm



**FOLDABLE EXAM TABLE**

Top Size:	800 W x 550 D
Table Height:	730mm



**HALF CIRCLE**

Top Size:	800W x 1600D
Table Height:	525 - 805mm *Adjustable optional* (Custom Sizes Available)



**ROUND TABLE**

Top Size:	1200 Dia
Table Height:	525 - 805mm *Adjustable optional*



### BASIC CLASSROOM TABLE

Top Size Options:	600W x 530D 2400W x 1200D
Table Height:	525 - 805mm *Adjustable optional*



### SIT & STAND

Top Sizes Options:	1200W x 600D 1500W x 750D 1800W x 750D 1800W x 900D
Table Height:	*Adjustable* 650 - 1275mm



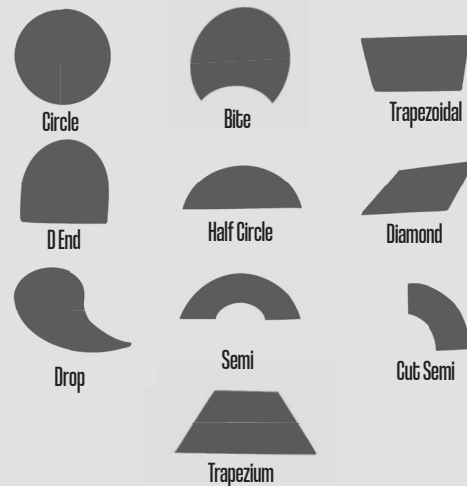
### DOUBLE HEIGHT STATION

Top Sizes Options:	1500W x 1500D 1800W x 1500D
Table Height:	*Adjustable* 730 - 1120 mm



### SHAPE

Top Size:	812W x 720D *Sizing custom*
Table Height:	525 - 805mm *Adjustable Optional*



### SHAPE OPTIONS

### LEG OPTIONS



STUDY STACKA



Top Size:	720W x 450Dmm
Table Height:	720mm



Top Size:	1500W x 450Dmm
Table Height:	720mm



STACKABLE

- Optional:
- Molded Urethane Edging
  - Under Desk Shelf
  - Modesty Screen
  - Folding Device Stand & Pen Holder
  - Bag Hook



RISE

Top Sizes:	800Dia
Table Height:	*Adjustable* 750 - 1150mm



WRITERS FLIP

Top Size:	650 Wx 400Dmm
Table Height:	*Adjustable* 750 - 1120mm



NOTE TAKER

Top Size:	400W x 400D
Table Height:	650mm

## TEACHERS DESKS

**STREAMLINE**

Top Sizes Options:	1800W x 900D 2100W x 900D
Table Height:	725mm

**CORNER STATION**

Top Size:	1800W x 1800 x 600D
Table Height:	730mm

**EASI**

Top Sizes:	1200W x 600D
Table Height:	730mm *Drawer Optional*

**FAITH**

Top Size Options:	1200W x 600D 1500W x 600D 1200W x 750D 1500W x 750D
Table Height:	710mm

**LOOPER**

Top Sizes Options:	1200W x 750D 1350W x 750D 1500W x 750D 1800W x 750D 1800W x 900D 2100W x 900D
Table Height:	725mm

**SLICE**

Top Sizes Options:	1800W x 900D 2100W x 900D
Table Height:	725mm

**WATERFALL**

Top Sizes Options:	1200W x 750D 1350W x 750D 1500W x 750D 1800W x 750D 1800W x 900D
Table Height:	720mm

## MEETING TABLES

**MELINE 4**

Top Sizes Options:	1400W x 1400D
	2600W x 1400D
	1700W x 1700D
	2600W x 1700D
Table Height:	750mm

**MELINE 6**

Top Sizes Options:	3600W x 1500D
	3600W x 1800D
	4200W x 1800D
Table Height:	750mm

**SPINE**

Top Sizes Options:	2100W x 900D
	2400W x 1200D
	2700W x 1200D
	3000W x 1200D
Table Height:	750mm

**BRIDGET ROUND**

Top Sizes Options:	2400W x 1200D
	3000W x 1200D
	3600W x 1200D
Table Height:	745mm

**BRIDGET SQUARE**

Top Sizes Options:	2400W x 1200D
	3000W x 1200D
	3600W x 1200D
Table Height:	745mm

**VISTA**

Top Size Options:	1800W x 750D
	1800W x 900D
Table Height:	730mm



### PEAK

Top Sizes Options:	1200W x 750D
	1350W x 750D
	1500W x 750D
	1800W x 750D
	1800W x 900D
Table Height:	720mm



### PYE

Top Size Options:	750 Dia
	900 Dia
	1200 Dia
Table Height	725mm
Options:	1025mm



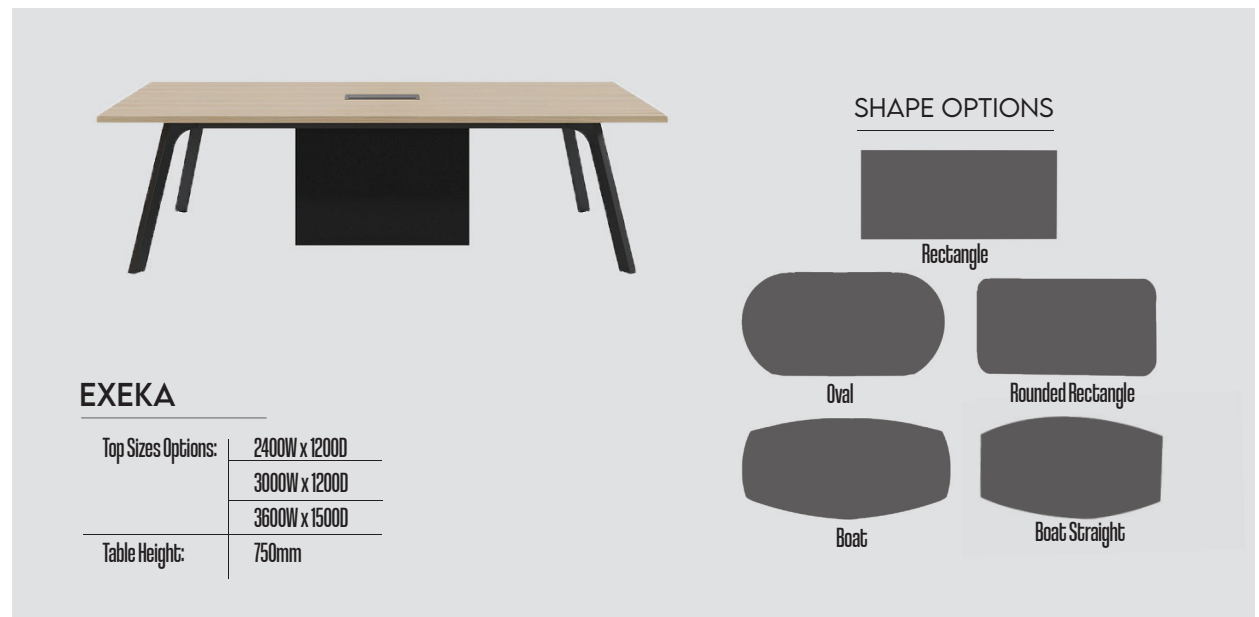
### STEM

Top Size Options:	750 Dia (3 Legs)
	900 Dia
	1200 Dia
Table Height:	750mm



### PLANK

Top Sizes Options:	2400W x 1200D
	3200W x 1200D
Table Height:	730mm



### EXEKA

Top Sizes Options:	2400W x 1200D
	3000W x 1200D
	3600W x 1500D
Table Height:	750mm

### SHAPE OPTIONS



Rectangle



Oval



Rounded Rectangle

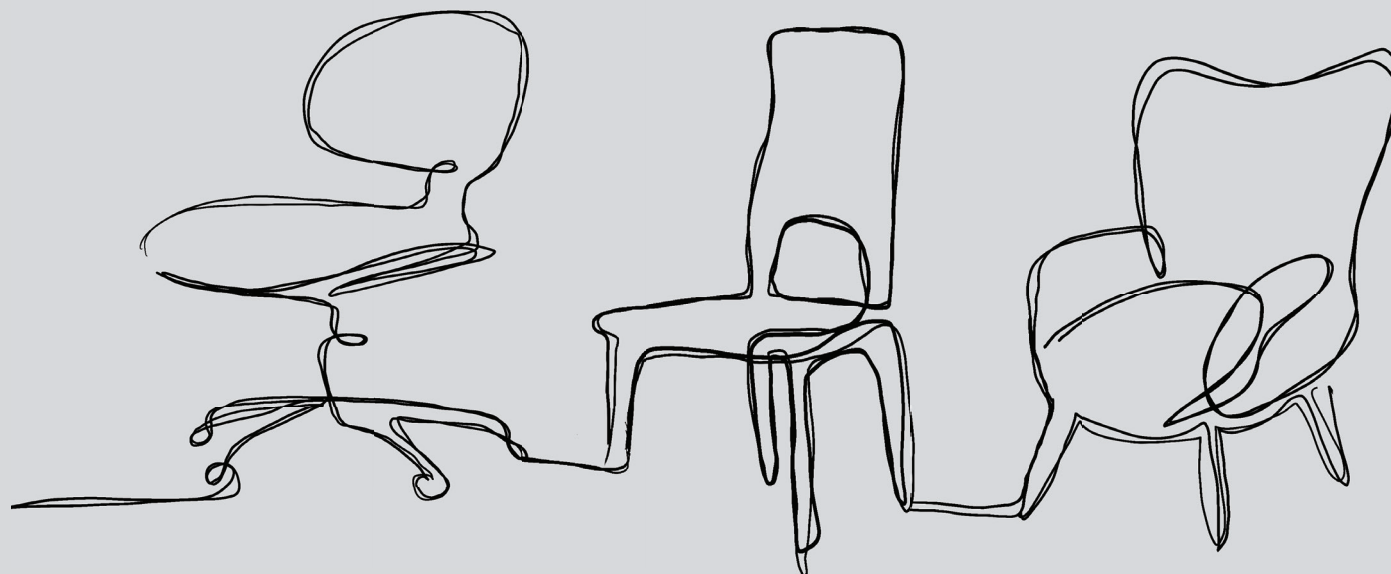


Boat



Boat Straight

A  
CENT  
T  
SK  
O  
TT  
TOOLS  
M  
A  
N  
S  
CHAIRS  
T  
U  
D  
E  
N  
T



**RELOAD**

Colour Range:	Black
Features:	15 Stackable High
Optional:	<ul style="list-style-type: none"> <li>Seat Pad Upholstery</li> <li>Mesh Back</li> <li>Fully Upholstered</li> </ul>

**DORA**

Colour Range:	Black, White, Navy, Green, Nude
Features:	5 Stackable High
Optional:	<ul style="list-style-type: none"> <li>Seat Pad Upholstery</li> </ul>

**LISA**

Colour Range:	White/Cream, Grey/Black, Charcoal/Light Grey, White/Almond Grey, Blush/Rose, khaki green/olive green, peach/orange
Features:	10 Stackable High
Optional:	<ul style="list-style-type: none"> <li>Seat Pad Upholstery</li> <li>Castors</li> <li>Trolley</li> </ul>

**CS ONE**

Colour Range:	Black, White, Red, Blue
Features:	10 Stackable High
Optional:	<ul style="list-style-type: none"> <li>Seat Pad Upholstery</li> <li>Castors</li> <li>Trolley</li> <li>Sled Base</li> </ul>

**CS 0**

Colour Range Shell:	Black, White, Red, Grey
Frame:	Black, White
Features:	10 Stackable High
Optional:	<ul style="list-style-type: none"> <li>Seat Pad Upholstery</li> <li>Trolley</li> </ul>

**X3**

Colour Range Shell:	Black, White, Red, Grey
Frame:	Black, White
Features:	10 Stackable High
Optional:	<ul style="list-style-type: none"> <li>Seat Pad Upholstery</li> </ul>

**ZEN**

Colour Range:	Orange, Red, Green, Black, White, Sand, Grey, Blue
Features:	4 Stackable High
Optional:	<ul style="list-style-type: none"> <li>Seat Pad Upholstery</li> <li>Castors, Arms, Sled Base</li> <li>Additional Colours</li> </ul>

**KANVAS**

Colour Range:	Black, White, Grey
Features:	4 Stackable High
Optional:	<ul style="list-style-type: none"> <li>Seat Pad Upholstery</li> <li>Castors, Arms, Sled Base</li> <li>Additional Colours</li> </ul>



**JUBEL V-LEG**

Colour Range:	Black, White, Grey
Features:	4 Stackable High
Optional:	- Seat Pad Upholstery - Arms, Castors - Additional Colours



**RIBBON**

Colour Range:	Black, White, Blue, Grey, Yellow
Features:	- 4 Stackable High - UV Protected
Optional:	- Seat and Back Rest: Colours Can Be Mixed



**ALEX**

Colour Range:	Black, White, Red, Green, Grey, Beige, Yellow
Features:	- 5 Stackable High - UV Protected



**LANA**

Colour Range:	Black, White, Red, Green
Features:	25 Stackable High
Optional:	- Additional Colours - Tablet - Upholstered



**MORSE**

Colour Range Shell:	Black
Frame:	Silver
Features:	30 Stackable High



**SCALE**

Colour Range Shell:	Black, White
Frame:	Black, White
Features:	10 Stackable High



**SCANDI**

Colour Range:	Oak, Beech
Features:	4 Stackable High



**NEO**

Colour Range Shell:	White, Black, Grey, Red, Green, Blue
Frame:	Black, White
Features:	12 Stackable High

**MAXIM**

Colour Range:	Any Fabric
Features:	10 Stackable High
Optional:	· Castors

**VENDER**

Colour Range:	Any Fabric
Features:	5 Stackable High

**RIPPLE**

Colour Range:	Grey, Charcoal, Blue, Green, Plum
Features:	10 Stackable High
Optional:	· Seat Pad Upholstery · Castors · Additional Colours

**QUE**

Colour Range:	Black, White, Red, Blue
Features:	10 Stackable High
Optional:	· Seat Pad Upholstery · Castors · Trolley

**TINA**

Colour Range:	Any Fabric
Frame:	Black
Features:	5 Stackable High

**FOCUS**

Colour Range Shell:	Black, Navy, Yellow, Orange, Mint, White
Upholstery:	Any Fabric
Features:	· Black Legs · Stackable 5 High

**FOLDEM**

Colour Range:	Any Fabric
Features:	Foldable
Optional:	· Castors, Arms, Tablet, · Additional Colours



FOLD  
STORE  
GO

## STUDENT CHAIRS



IFLY

Colour Range:	Black, White
Features:	<ul style="list-style-type: none"> <li>• Matte Finish Shell</li> <li>• Timber Legs</li> </ul>
Optional:	<ul style="list-style-type: none"> <li>• Sled Base</li> <li>• Star Castor Base</li> </ul>



JUBEL TIMBER

Colour Range:	Black, White, Grey
Features:	<ul style="list-style-type: none"> <li>• Satin Finish Shell</li> <li>• Timber Legs</li> </ul>
Optional:	<ul style="list-style-type: none"> <li>• Sled</li> <li>• Four Leg</li> <li>• Castors</li> </ul>



TIM

Colour Range:	Beech, Wenge
Legs:	Chrome
Optional:	<ul style="list-style-type: none"> <li>• Sled Base</li> </ul>



SCALE

Colour Range:	Black, White
Features:	<ul style="list-style-type: none"> <li>• Embossed Patterned Shell</li> <li>• Black 4 Leg</li> </ul>
Optional:	<ul style="list-style-type: none"> <li>• Sled Base</li> <li>• Timber Legs</li> <li>• Castors</li> </ul>



SHINE

Colour Range Shell:	Black, White
Legs:	Silver
Features:	<ul style="list-style-type: none"> <li>• High Gloss Finish</li> </ul>



KYE

Colour Range Shell:	Black, Red, White
Legs:	Timber, Black
Optional:	<ul style="list-style-type: none"> <li>• Castors</li> <li>• Seat Upholstery</li> </ul>



FIN

Colour Range Shell:	Black, White
Legs:	Silver
Features:	<ul style="list-style-type: none"> <li>• 10 Stackable High</li> </ul>



LEER

Upholstery:	Any Fabric
Shell Colour:	White, Black, Blue, Orange
Optional:	<ul style="list-style-type: none"> <li>• Metal Black Legs</li> <li>• Fully Upholstered</li> <li>• No Upholstery</li> </ul>

**VENICE ROUND**

Colour Range:	Any Fabric
Features:	5 Stackable High
Optional:	<ul style="list-style-type: none"> <li>Arms</li> <li>Chrome Legs</li> <li>Sled Base</li> </ul>

**VENICE SQUARE**

Colour Range:	Any Fabric
Features:	5 Stackable High
Optional:	<ul style="list-style-type: none"> <li>Arms</li> <li>Chrome Legs</li> <li>Sled Base</li> </ul>

**VENICE MESH ROUND**

Colour Range:	Any Fabric
Features:	5 Stackable High
Optional:	<ul style="list-style-type: none"> <li>Arms</li> <li>Black Legs</li> <li>4 Leg</li> </ul>

**VENICE MESH SQUARE**

Colour Range:	Any Fabric
Features:	5 Stackable High
Optional:	<ul style="list-style-type: none"> <li>No Arms</li> <li>Chrome Base</li> <li>Sled Base</li> </ul>

**JUBEL TIMBER**

Colour Range:	Any Fabric
Legs:	Timber, Black,
Optional:	Custom Leg Colour

**RICKY**

Colour Range Shell:	White, Black, Red
Upholstery:	Any Fabric
Optional:	<ul style="list-style-type: none"> <li>Tablet</li> <li>Castors</li> <li>Sled Base</li> <li>No Upholstery</li> </ul>

**BRENT**

Colour Range	Any Fabric
Upholstery:	Black
Optional:	<ul style="list-style-type: none"> <li>No Arms</li> <li>Castors</li> <li>Tablet</li> <li>Linking Connector</li> <li>Mesh Back</li> </ul>

**GIO**

Colour Range:	Any Fabric
Legs:	Black
Features:	5 Stackable High

## ACCENT CHAIRS



### MARCELLA

Colour Range:	Any Fabric
Features:	Timber Legs
Optional:	<ul style="list-style-type: none"> <li>Natural Timber Legs</li> <li>Dark Stained Timber Legs</li> <li>Additional Colours</li> </ul>



### PATH

Colour Range:	Any Fabric
Features:	Upholstered With Chrome Legs
Optional:	<ul style="list-style-type: none"> <li>Custom Sizes</li> </ul>



### CAMILLA

Colour Range:	Any Fabric
Features:	Upholstered with Timber Legs
Optional:	<ul style="list-style-type: none"> <li>Sled Base</li> <li>Timber Base (2 Options)</li> <li>Swivel Base</li> <li>Additional Colours</li> </ul>



### ANNETTE

Colour Range:	Any Fabric
Features:	Upholstered With Timber Legs
Optional:	<ul style="list-style-type: none"> <li>Steel Disk Base</li> <li>5-Point Castor Base</li> <li>Timber Legs (2 Options)</li> <li>Additional Colours</li> </ul>



### DAISY

Colour Range:	Any Fabric
Features:	Upholstered With 4-Star Base
Optional:	<ul style="list-style-type: none"> <li>Additional Colours</li> </ul>



### DEVA

Colour Range:	Any Fabric
Features:	Upholstered With Timber Legs
Optional:	<ul style="list-style-type: none"> <li>No Arms</li> <li>Stained Legs</li> </ul>



### CHI

Colour Range:	Any Fabric
Features:	Single Seater Upholstered With Silver Legs
Optional:	<ul style="list-style-type: none"> <li>Single, Two, Three Seater</li> </ul>



### MALIBU

Colour Range:	Any Fabric
Features:	Single Seater With Black Timber
Optional:	<ul style="list-style-type: none"> <li>Arms</li> <li>Single, Double, Triple Seater</li> <li>Natural Timber Arms</li> <li>Dark Stained Arms</li> <li>No Arms</li> </ul>



### LIBBY

Colour Range:	Any Fabric
Features:	Upholstered With Black Frame



### CIRCA

Colour Range:	Any Fabric
Features:	Upholstered With Black Slim Legs



### CLOUD

Colour Range:	Any Fabric
Features:	Cushioned Upholstery With Timber
Optional:	<ul style="list-style-type: none"> <li>Legs</li> <li>Additional Cushions</li> <li>Sled Base</li> <li>Swivel Base Timber</li> <li>Disc Base</li> </ul>



### BUCKET

Colour Range:	Grey, White, Blush, Light Blue, Teal, Nude
Features:	Tub Shell With Timber Legs
Optional:	<ul style="list-style-type: none"> <li>Additional Coloured Legs</li> <li>Sled Base</li> <li>4 Star Base With castors</li> </ul>



### RAMA

Colour Range:	Any Fabric
Features:	Fully Upholstered With Chrome Legs



### LINGO

Colour Range:	Any Fabric
Features:	Fully upholstered With Timber Legs
Optional:	<ul style="list-style-type: none"> <li>Plain Upholstery</li> </ul>



### EASE

Colour Range:	Any Fabric
Features:	Fully Upholstered With Timber Swivel Base
Optional:	<ul style="list-style-type: none"> <li>Straight Legs</li> <li>Timber Legs</li> <li>Sled base</li> <li>4 Star base</li> </ul>



### YORK

Colour Range:	Any Fabric
Features:	Fully Upholstered With Timber Legs
Optional:	<ul style="list-style-type: none"> <li>Relaxed Upholstery</li> <li>Sled Base</li> <li>Timber Swivel base</li> <li>4 Star Base</li> <li>Disc Base</li> </ul>



**RODNEY**

Colour Range:	Any Fabric
Features:	Upholstered With Timber Legs
Optional:	<ul style="list-style-type: none"> <li>Wire Base</li> <li>Extended Head Rest</li> </ul>



**EFFIE**

Colour Range:	Any Fabric
Features:	Upholstered With Wire Base
Optional:	<ul style="list-style-type: none"> <li>Timber Legs</li> </ul>



**ZINC**

Colour Range:	Any Fabric
Features:	Upholstered With Wire Base
Optional:	<ul style="list-style-type: none"> <li>Timber Legs</li> <li>Extended Head Rest</li> </ul>



**PISCO**

Colour Range:	Any Fabric
Features:	Upholstered With Tubular Frame
Optional:	<ul style="list-style-type: none"> <li>No Arms</li> </ul>



**SOL**

Colour Range:	White, Black, Light Teal, Almond Grey, Peach, Blush
Features:	Upholstered With 4-Star Base
Optional:	<ul style="list-style-type: none"> <li>Upholstered Any Fabric</li> <li>No arms</li> </ul>



**ARIA**

Colour Range:	Any Fabric
Frame:	Chrome Legs
Features:	<ul style="list-style-type: none"> <li>Timber Legs</li> <li>Powder-coat Base</li> </ul>



**BANDO**

Colour Range:	Any Fabric
Features:	Upholstered With Timber Legs
Optional:	<ul style="list-style-type: none"> <li>Sled Base</li> <li>Pedestal Base</li> <li>Seat Pad Additional Colour</li> </ul>



**PALA**

Colour Range:	Any Fabric
Features:	Upholstered With Timber Legs
Optional:	<ul style="list-style-type: none"> <li>Chrome Star Base</li> <li>Swivel Chrome Star Base</li> </ul>



### CURVE

Colour Range:	Any Fabric
Features:	Upholstered With Timber Legs
Optional:	<ul style="list-style-type: none"> <li>· Chrome Star Base</li> <li>· Swivel Chrome Star Base</li> </ul>



### ARI

Colour Range:	Any Fabric
Features:	Swivel With Auto Return To Middle
Optional:	<ul style="list-style-type: none"> <li>· Black Base</li> <li>· Seat Pad Additional Colour</li> </ul>



### NARLA

Colour Range:	Any Fabric
Features:	Upholstered With Timber Frame & arms
Optional:	<ul style="list-style-type: none"> <li>· Black Timber Frame</li> </ul>



### BROOKLYN

Colour Range:	Black
Features:	Upholstered with Black 4 Star Base
Optional:	<ul style="list-style-type: none"> <li>· Additional Colours</li> </ul>



### BUKI

Colour Range:	Any Fabric
Features:	Upholstered With Timber Legs
Optional:	<ul style="list-style-type: none"> <li>· Black Legs</li> </ul>



### OMNI

Colour Range:	Any Fabric
Features:	Upholstered With Timber Legs
Optional:	<ul style="list-style-type: none"> <li>· Black Legs</li> <li>· Sled Base</li> <li>· Straight Legs</li> <li>· 4 Star Base</li> <li>· Castors</li> </ul>



### OPERA

Colour Range:	Any Fabric
Features:	Upholstered With Chrome Sled Base
Optional:	<ul style="list-style-type: none"> <li>· Timber Legs</li> <li>· Black Legs</li> <li>· 4 Star Base</li> <li>· Castors</li> </ul>



### CUPPA

Colour Range:	Any Fabric
Features:	Upholstered With Chrome 4 Star Base
Optional:	<ul style="list-style-type: none"> <li>· Base</li> <li>· Timber Legs</li> <li>· Black Legs</li> <li>· 4 Star Base</li> <li>· Castors</li> </ul>

## TASK SEATING

**ALPHA**

Colour Range:	Any Fabric
Optional:	<ul style="list-style-type: none"> <li>Arms</li> <li>2 or 3 Lever</li> <li>Back Height Adjustable</li> </ul>

**ALPHA HIGH BACK**

Colour Range:	Any Fabric
Optional:	<ul style="list-style-type: none"> <li>Arms</li> <li>2 or 3 Lever</li> <li>Back Height Adjustable</li> </ul>

**ALPHA DRAFTER**

Colour Range:	Any Fabric
Optional:	<ul style="list-style-type: none"> <li>Arms</li> <li>2 or 3 Lever</li> </ul>

Our task seating range includes a diverse series of practical and ergonomic chairs providing comfort for specialized areas such as classrooms, offices, laboratories and more.

Task seating is designed to provide comfort by tailoring to the bodies needs, this is essential for long periods of use. We advise you get in touch with a DI representative to match your needs to the perfect chair.

**APOLLO**

Colour Range:	Any Fabric
Optional:	<ul style="list-style-type: none"> <li>Arms</li> <li>2 or 3 Lever</li> </ul>

**APOLLO ADJUST HIGH BACK**

Colour Range:	Any Fabric
Optional:	<ul style="list-style-type: none"> <li>Arms</li> <li>2 or 3 Lever</li> </ul>

**APOLLO HIGH BACK**

Colour Range:	Any Fabric
Optional:	<ul style="list-style-type: none"> <li>Arms</li> <li>2 or 3 Lever</li> </ul>

**APOLLO DRAFTER**

Colour Range:	Any Fabric
Optional:	<ul style="list-style-type: none"> <li>2 or 3 Lever</li> </ul>

**DELTA MID BACK**

Colour Range:	Any Fabric
Optional:	<ul style="list-style-type: none"> <li>Arms</li> <li>Seat Sizes</li> <li>Mesh Back</li> </ul>

**DELTA HIGH BACK**

Colour Range:	Any Fabric
Optional:	<ul style="list-style-type: none"> <li>Arms</li> <li>Seat Sizes</li> <li>Mesh Back</li> </ul>

**DELTA EXTRA HIGH BACK**

Colour Range:	Any Fabric
Optional:	<ul style="list-style-type: none"> <li>Arms</li> <li>Seat Sizes</li> <li>Mesh Back</li> </ul>

**DELTA DRAFTER**

Colour Range:	Any Fabric With Black Mesh Back
Optional:	<ul style="list-style-type: none"> <li>Arms</li> <li>Seat Sizes</li> <li>Upholstered Back</li> </ul>

**BODY-LINE**

Colour Range:	Any Fabric
Optional:	<ul style="list-style-type: none"> <li>High Back</li> <li>Extra Comfort</li> </ul>

**BODY-LINE PLUS**

Colour Range:	Any Fabric
Optional:	<ul style="list-style-type: none"> <li>High back</li> <li>Standard</li> </ul>

**KINETIC**

Colour Range:	Any Fabric
Optional:	<ul style="list-style-type: none"> <li>High Back</li> <li>Executive</li> </ul>

**RITELINE**

Colour Range:	Any Fabric
Optional:	<ul style="list-style-type: none"> <li>High Back</li> <li>Arms</li> </ul>



**REXA**

Colour Range:	Any Fabric
Features:	Standard Size
Optional:	<ul style="list-style-type: none"> <li>· Ratchet or Manual Adjustable</li> <li>· Plus</li> <li>· High Back</li> <li>· Mesh Back</li> </ul>



**REXA PLUS**

Colour Range:	Any Fabric
Features:	Wide Seat With Extra Comfort
Optional:	<ul style="list-style-type: none"> <li>· Ratchet or Manual Adjustable</li> <li>· Standard</li> <li>· High Back</li> <li>· Mesh Back</li> </ul>



**REXA MESH**

Colour Range:	Any Fabric
Optional:	<ul style="list-style-type: none"> <li>· Ratchet or Manual Adjustable</li> <li>· Plus</li> <li>· High Back</li> <li>· Upholstered Back</li> </ul>



**REXA DRAFTER**

Colour Range:	Any Fabric
Optional:	<ul style="list-style-type: none"> <li>· Mesh Back</li> </ul>



**ATLAS 135**

Colour Range:	Any Fabric
Optional:	<ul style="list-style-type: none"> <li>· Arms</li> <li>· 2 or 3 Lever</li> <li>· Back Height Adjustable</li> </ul>



**ATLAS 160**

Colour Range:	Any Fabric
Optional:	<ul style="list-style-type: none"> <li>· No Arms</li> <li>· 2 or 3 Lever</li> <li>· Back Height Adjustable</li> </ul>



**ATLAS DRAFTER**

Colour Range:	Any Fabric
Optional:	<ul style="list-style-type: none"> <li>· Arms</li> <li>· 2 or 3 Lever</li> </ul>

CAN'T FIND THE RIGHT CHAIR?

Reach out to a DI Representative.  
At DI Office Design options are endless and it is our guarantee that your needs will be fulfilled.

**I70**

Colour Range:	Any Fabric
Optional:	- Head Rest

**ORTHOPOD**

Colour Range:	Any Fabric
Optional:	- Seat Sizes - No Arms

**CONTEMPO**

Colour:	Black Leather
Optional:	- High Back

**DIRECTOR**

Colour:	Black Leather
Optional:	- High Back

**COBI**

Colour:	Black
Optional:	N/A

**G1**

Colour:	Black
Optional:	- Adjustable Arm Rest

**TEAM SYNC**

Colour Range:	Any Fabric
Optional:	- No Arms

**RITELINE**

Colour Range:	Any Fabric
Shell:	Black, White
Optional:	- Straight Legs



**SELFIE**

Colour Range:	Any Fabric
Optional:	- N/A



**X-TRANS**

Colour Range:	Black, White
Optional:	- Alloy Star Base



**A-ONE**

Colour Range:	White/Grey, Black/Black
Optional:	N/A



**CICERO**

Colour Range:	Any Fabric
Shell:	Black, White
Optional:	- Nylon Base

## STOOLS



**ALPHA**

Colour Range:	Any Fabric
Optional:	- Drafter



**LAB 100**

Colour:	Black
Optional:	- Back



**LAB 200**

Colour:	Black
Optional:	N/A



**PERCHER**

Colour Range:	Any Fabric
Optional:	N/A



### UTILITY

Colour Range:	Any Fabric
Optional:	<ul style="list-style-type: none"> <li>· Foot Ring</li> <li>· Aluminium Base</li> </ul>



### CANVA

Colour:	Natural Timber
Optional:	<ul style="list-style-type: none"> <li>· 705mm H</li> <li>· 625mm H</li> </ul>



### CANVA UPHOLSTERED

Colour Range:	Any Fabric
Optional:	<ul style="list-style-type: none"> <li>· No White Trim</li> <li>· 705mm H</li> <li>· 625mm H</li> </ul>



### TRI-STOOL

Colour Range Tops:	White, Grey, Yellow, Burgandy, Khaki
Colour Range Base:	Beech, White
Optional:	<ul style="list-style-type: none"> <li>· 465mm H</li> <li>· 650mm H</li> <li>· 755mm H</li> </ul>



### LYNE

Colour Range:	Grey, White
Optional:	<ul style="list-style-type: none"> <li>· 460mm H</li> <li>· 750mm H</li> </ul>



### TIM

Colour Range:	White, Black, Oak, Birch
Optional:	<ul style="list-style-type: none"> <li>· Low Stool</li> </ul>



### TIM JR

Colour Range:	White, Black, Oak, Birch
Optional:	<ul style="list-style-type: none"> <li>· High Stool</li> </ul>



### LAURA

Colour Range Seat:	Timber, Natural, White, Grey, Light Blue
Colour Range Base:	White, Black
Optional:	<ul style="list-style-type: none"> <li>· 640mm H</li> <li>· 730mm H</li> </ul>



## CRAFT

Colour:	Oak
Optional:	N/A



## SCULPT

Colour Range:	Oak
Optional:	N/A



## PLANK

Colour Range:	Young Beech
Optional:	- Custom Sizes - Custom Colours



## FILO

Colour Range:	Black
Optional:	- Chrome Base



## SCALE HIGH TIMBER

Colour Range:	Black, White
Optional:	- Chrome Sled Base



## SCALE HIGH SLED

Colour:	Black, White
Optional:	- Timber Base



## JUBEL HIGH

Colour:	Black, Grey, White
Optional:	- Fully Upholstered Any Fabric - No Upholstery - Standard Chair



## NEO SWIVEL

Colour Range Seat:	Black, White
Colour Range Base:	White, Black, Chrome
Optional:	- Sled Base



### CS ONE HIGH

Colour Range:	Black, White, Blue, Red
Optional:	<ul style="list-style-type: none"> <li>Seat Pad Upholstery</li> <li>Standard Chair</li> </ul>



### PIKE

Colour Range:	Black, White, Red, Green, Grey, Light Blue, Nude
Optional:	<ul style="list-style-type: none"> <li>Custom Leg Colour</li> <li>655mm H</li> <li>755mm H</li> </ul>



### TINA HIGH

Colour Range:	Any Fabric
Optional:	<ul style="list-style-type: none"> <li>Upholstery Details</li> <li>Chrome or Black Base</li> <li>640mm H</li> <li>740mm H</li> </ul>



### LEER HIGH

Colour Range Shell:	Black, White, Green, Blood Orange, Blue
Optional:	<ul style="list-style-type: none"> <li>No Upholstery</li> <li>Fully Upholstered Any Fabric</li> <li>Chrome or Black Base</li> <li>640mm H</li> <li>740mm H</li> </ul>



### MAXIM HIGH

Colour Range:	Any Fabric
Optional:	<ul style="list-style-type: none"> <li>650mm H</li> <li>760mm H</li> </ul>



### WRICK SLED

Colour Range:	Any Fabric
Optional:	<ul style="list-style-type: none"> <li>Chrome or Black Base</li> <li>Lift Base</li> </ul>



### OLGA

Colour Range:	Any Fabric
Optional:	<ul style="list-style-type: none"> <li>Chrome or Black Base</li> </ul>



### WRICK LIFT

Colour Range:	Any Fabric
Optional:	<ul style="list-style-type: none"> <li>Sled Base</li> </ul>

## OTTOMANS



### SQUARE

Colour Range:	Any Fabric
Sizes:	450, 600, 900mm



### ROUND

Colour Range:	Any Fabric
Sizes:	450, 600, 900mm



### TRIANGLE

Colour Range:	Any Fabric
Size:	600mm

### WANTING VIBRANCE?

Ottomans are a great furniture option to add fun and colour into any space, whether that be a breakout area or simply a classroom.

Our large range of Ottomans covers all shapes and sizes and can be mixed/matched with each other to create an original furniture plan.



### HEXAGON

Colour Range:	Any Fabric
Optional:	450, 600, 900mm



### PEBBLE

Colour Range:	Any Fabric
Optional:	450, 600, 900, 1200mm



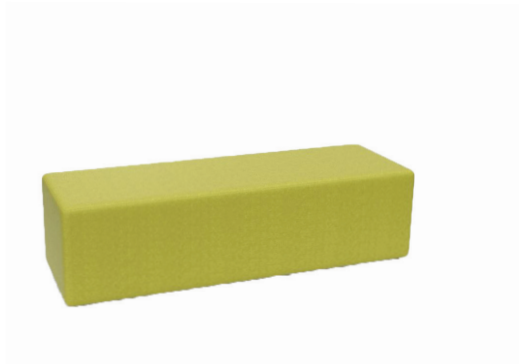
### PIE

Colour Range:	Any Fabric
Optional:	485mm



### ROBOT

Colour Range:	Any Fabric
Optional:	500, 750, 900mm



### STRAIGHT

Colour Range:	Any Fabric
Size:	1872W x 450D x 450H



### STRAIGHT WITH BACK

Colour Range:	Any Fabric
Size:	1872W x 620D x 750H



### CURVE

Colour Range:	Any Fabric
Size:	1431W x 450D x 750H



### CURVE WITH BACK

Colour Range:	Any Fabric
Size:	2008W x 620D x 750H



### PYTHON

Colour Range:	Any Fabric
Size:	1280W x 450D *Figure Is Two Connected*



### BILABONG

Colour Range:	Any Fabric
Single Seater:	840W x 750D x 450H
Double Seater:	1680W x 750D x 450H



### BOX

Colour Range:	Any Fabric
Size:	600W x 600D 1200W x 450D 1500W x 600D 1800W x 600D 2100W x 600D 1800W x 750D



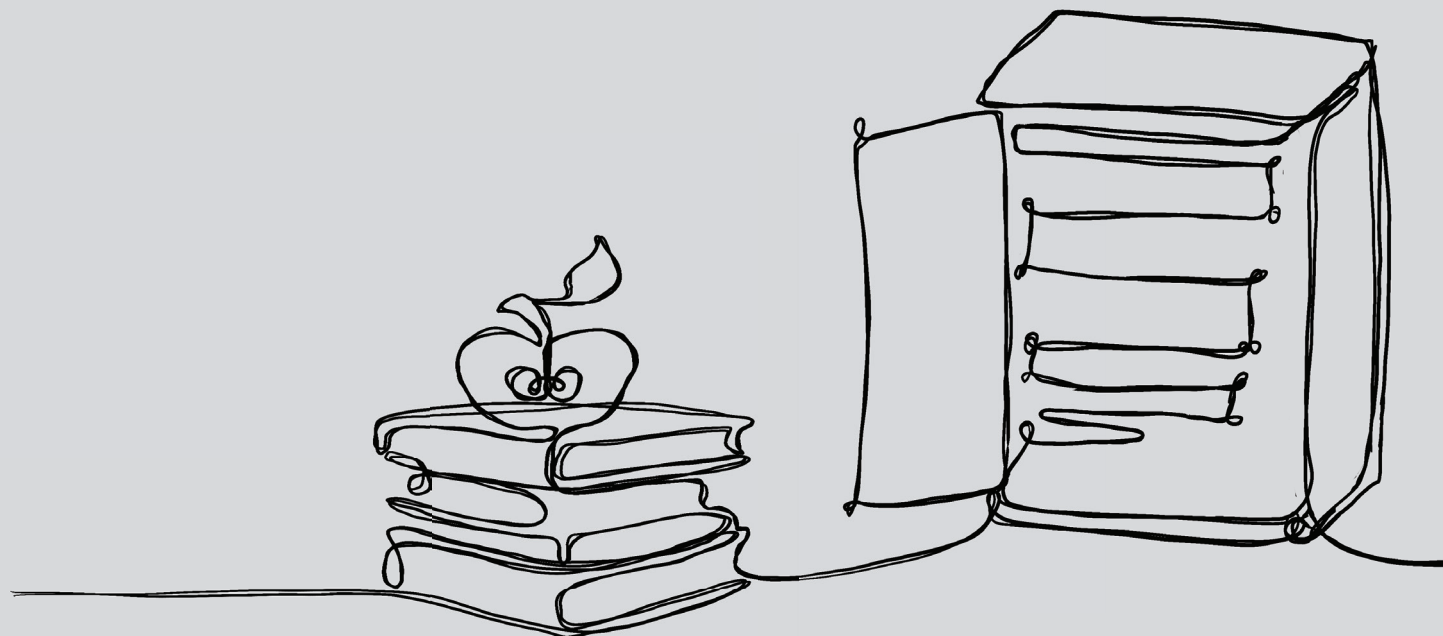
### WAVE

Colour Range:	Any Fabric
Size:	1500W x 600D x 450H

# STORAGE

LOCKERS

CLASSROOM



## CLASSROOM STORAGE

**TUB CADDY 5**

Colour Range:	Black, Grey, White, Yellow, Orange, Red, Green
Size:	415W x 454D x 886H

**TUB CADDY 10**

Colour Range:	Black, Grey, White, Yellow, Orange, Red, Green
Size:	810W x 454D x 886H

**TUB CADDY 15**

Colour Range:	Black, Grey, White, Yellow, Orange, Red, Green
Size:	1203W x 454D x 886H

**KEEP IT NEAT**

Keep spaces tidy and organized with our storage range.

High quality materials insures durability thats why our storage units are popular amongst schools. Organize your classrooms with these colourful and practical units.

**FRAME TUB CADDY 5**

Colour Range:	Grey / Graphite
Size:	540W x 420D x 873H

**FRAME TUB CADDY 10**

Colour Range:	Grey / Graphite
Size:	992W x 420D x 873H

**FRAME TUB CADDY 15**

Colour Range:	Grey / Graphite
Size:	1450W x 420D x 873H

**BOOK BOX**

Colour Range:	Black, White, Timber Range
Size:	600W x 600D x 600H



PRIMARY BOOKSHELF

Colour Range:	Timber Range, Grey Stone, Yellow, Green, Red, Blue, Orange
Size:	900W x 300D x 1200H



KINDLE BOOKSHELF

Colour Range:	Black, Grey, White
Size:	900W x 250D x 1321H 900W x 250D x 1620H



BOOK DISPLAY

Colour Range:	Black, White, Timber Range
Size:	1431W x 450D x 750H



SIMPLE CABINET

Colour Range:	Black, White, Timber Range
Sizes:	900W x 450D 1200W x 450D 1500W x 450D 1800W x 450D 2100W x 450D
Height Options:	725H, 900H, 1200H, 1500H, 1800H, 2100H, 2400H



MOBILE CADDY

Colour Range:	Black, White, Timber Range
Size:	858W x 500D x 600H



PIGEON HOLE

Colour Range:	Black, White, Timber Range
Size:	900W x 330D x 1800H *Custom Available*



SLIM-LINE CABINET

Colour Range:	Any Fabric
Size:	600W x 600D 1200W x 450D 1500W x 600D 1800W x 600D 2100W x 600D 1800W x 750D



PREMIER CUPBOARD

Colour Range:	Any Fabric
Size:	900W x 450D x 1800H
Options:	- 2 Half Doors *As Per Figure* - 4 Half Doors - 2 Full Doors



### BOOK STAND

Colour Range:	Black, Grey, White, Yellow, Orange, Red, Green, Timber Range
Sizes:	1200W x 400D x 980H 1800W x 400D x 980H



### 360 BOOKSHELF

Colour Range:	Black, Grey, White, Yellow, Orange, Red, Green, Timber Range
Size:	900Dia x 750H 1200Dia x 750H



### FILE CABINET

Colour Range:	Black, Grey, White, Yellow, Orange, Red, Green, Timber Range
Size:	465W x 505D x 725H (2x Drawer) 465W x 505D x 977H (3x Drawer) 465W x 505D x 1270H (4x Drawer)



### SLIDING CREDENZA

Colour Range:	Grey, White
Size:	1200W x 450D x 730H 1800W x 450D x 730H



### DUO

Colour Range:	Black, Grey, White, Yellow, Orange, Red, Green, Timber Range
Sizes:	900W x 450D x 725H 1500W x 450D x 725H 1800W x 450D x 725H 2100W x 450D x 725H



### COMPLEX

Colour Range:	Black, Grey, White, Yellow, Orange, Red, Green, Timber Range
Size:	1200W x 450D x 650H



### LAPTOP STATION

Colour Range:	Black, Grey, White, Yellow, Orange, Red, Green, Timber Range
Size:	280W x 370D x 600H



### MOBILE PEDESTAL

Colour Range:	Black, Charcoal, Grey, White
Size:	900W x 465D x 600H

LOCKERS



NORDIC LOCKER 1

Colour Range:	Black, Grey, White, Yellow, Orange, Red, Green, Timber Range
Size (1x Column):	300W x 500D x 1800H



NORDIC LOCKER 2

Colour Range:	Black, Grey, White, Yellow, Orange, Red, Green, Timber Range
Size (1x Column):	300W x 500D x 1800H
Locker:	875H



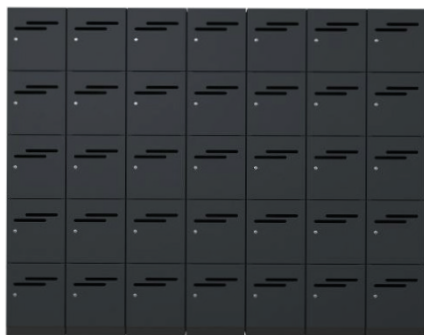
NORDIC LOCKER 3

Colour Range:	Black, Grey, White, Yellow, Orange, Red, Green, Timber Range
Size (1x Column):	300W x 500D x 1800H
Locker:	583H



NORDIC LOCKER 4

Colour Range:	Black, Grey, White, Yellow, Orange, Red, Green, Timber Range
Size (1x Column):	300W x 500D x 1800H
Locker:	437.5H



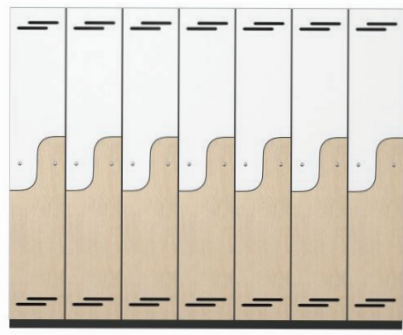
NORDIC LOCKER 5

Colour Range:	Black, Grey, White, Yellow, Orange, Red, Green, Timber Range
Size (1x Column):	300W x 500D x 1800H
Locker:	350H



PLANTER LOCKER

Colour Range:	Black, Grey, White, Yellow, Orange, Red, Green, Timber Range
Size (8 Lockers):	1200W x 500D x 1900H
Locker:	300W x 500D x 600H



PUZZLE LOCKER

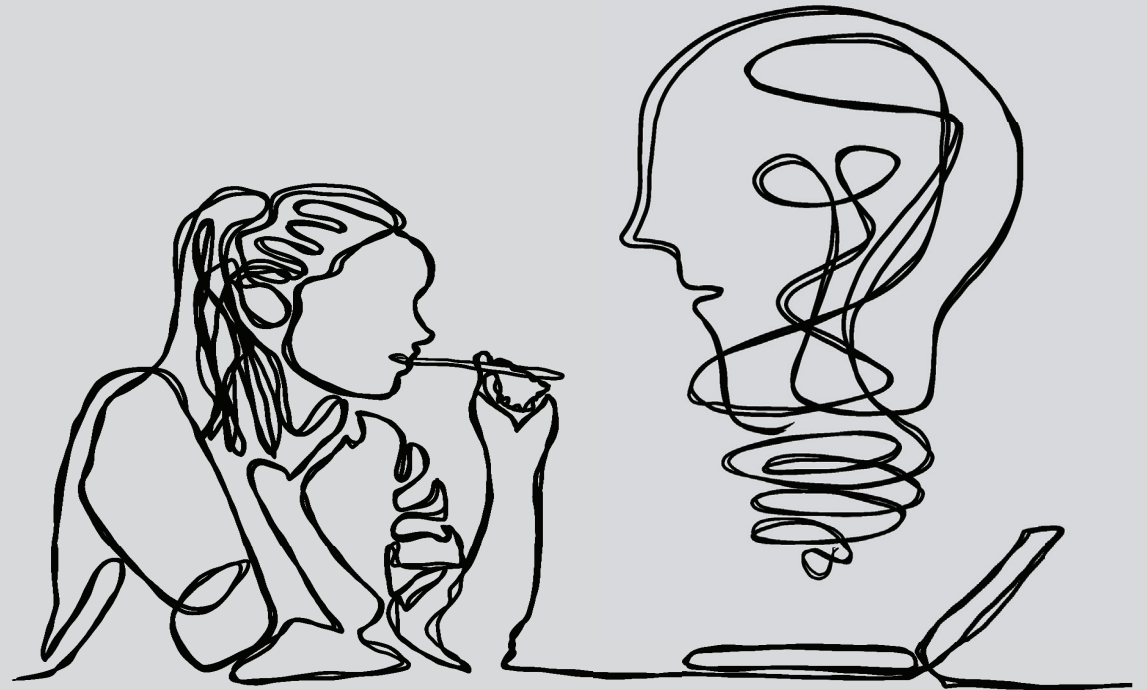
Colour Range:	Black, Grey, White, Yellow, Orange, Red, Green, Timber Range
Size (1x Column):	300W x 500D x 1800H
Locker:	1025H



COMPACT LOCKER

Colour Range:	White
Size:	800W x 486D x 1375H
Locker:	458H

W I  
H N  
T H I N K T A N K  
T O V A T I O N  
B O A R D S  
P A R T I T I O N S  
P R E S E N T A T I O N



## WHITEBOARDS



### STANDARD FRAMED

**Features:** Hard-wearing magnetic surface for general use, ideal for all light to medium writing users. Aluminum frame, concealed corner mounting supplied with pen tray and fixings.

**Size:**  
\*Made To Measure\*  
600W x 450H - 3000W x 1200H



### COMBI

**Features:** Practical and versatile great for staff rooms, and notice areas. Singled sided 1/2 magnetic whiteboard, 1/2 cork board.

**Size:**  
900W x 600H    1200W x 900H



### COMMUNICATOR

**Features:** Toughened safety glass is low iron content providing a true ultra white colour. Polished edges and smooth corner tips provide the quality finishing touches. Galvanized steel backing allows glass-board magnets.

**Size:**  
600W x 450H    900W x 600H    1000W x 1000H  
1200W x 900H



### PEEKABOO

**Features:** Perfect for saving space with double sided whiteboard panels. Magnetic surface on inside, non-magnetic surface on outside.

**Size:**  
900W x 600H    1200W x 900H



### EDGE

**Features:** Designed to be installed with no visible fixings, our low profile 4mm edge boards can be butt joined horizontally or vertically, side by side to create a vast communication wall.

**Size:**  
\*Made To Measure\*  
900W x 600H - 3000W x 1200H



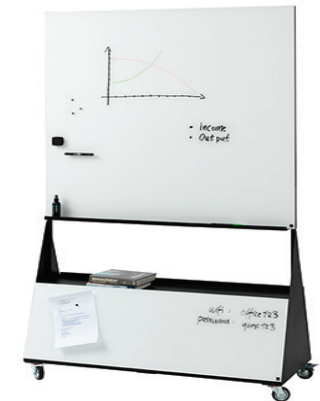
### A-FRAME

**Features:** Mobile practical collaboration tool, featuring a double sided Vitreous Enamel (porcelain) writing surface. Easily folded and stored.

**Size:**  
900W x 1800H

## TAKE NOTES

Our extended range of whiteboards ensures that ideas are expressed, whether thats in a classroom or staff room.



### MOBLI

**Features:** White magnetic glass-board with black metal stand, wheels under the board for easy mobility. Glass-board on both sides and a built-in pen tray. On one side of the mobile there is a room for storage and on the other side a small additional glass-board.

**Size:**  
1200W x 2050H



## FLIP & GO

### Features:

White magnetic glass board with black metal stand, wheels under the board for easy mobility. Glass board on both sides and a built-in pen tray.

On one side of the mobile there is a room for storage and on the other side a small additional glass-board.

### Size:

900W x 1200H 900W x 1500 1200W x 1500H 1200W x 1800H



## PROJECTOR BOARD

### Features:

Designed with 60% less glare reflection, available in our Standard and Edge range. Recommended for needs that are 80% projection and 20% writing.

### Size:

\*Made To Measure\*  
600W x 450H - 3000W x 1200H



## PARTITION

### Features:

Toughened safety glass is low iron content providing a true ultra white colour. Polished edges and smooth corner tips provide the quality finishing touches. Galvanized steel backing allows glass-board magnets.

### Size:

900W x 1800H



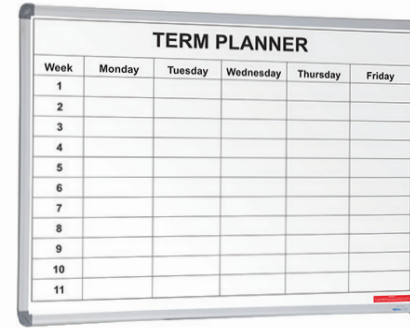
## COPY BOARD

### Features:

Electronic whiteboard that transforms hand drawn pieces into documents, easily connect a USB and save work. Includes Ink Jet printer and wall mount brackets \*Floor stand optional\*

### Size:

1300W x 910H 1800W x 910H



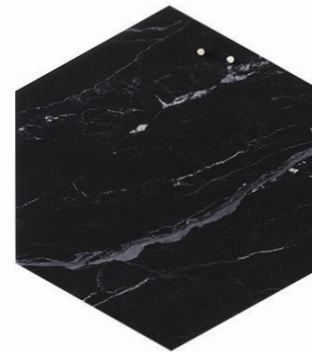
## PLANNER

### Features:

Designed to be installed with no visible fixings, our low profile 4mm edge boards can be butt joined horizontally or vertically, side by side to create a vast communication wall. Ask about our other options.

### Size:

1200W x 900H (Cell Size: 200W X 62H)



## HEXAGON

### Features:

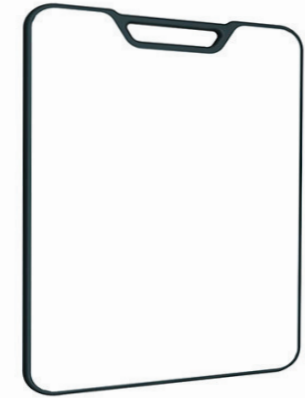
Hexagonal magnetic glass board, perfect for creating a functional feature piece to any bland wall.

### Colour Range:

Black Marble, Mirror, Blush

### Size:

420W x 485H



## HANDY

### Features:

Ideal for STEM education, collaboration and brainstorming. Double sided whiteboard with a light grid on one side and plastic charcoal edging.

### Size:

300W x 450H



## CIRCLE

### Features:

Circle magnetic glass board, perfect for creating a functional feature piece to any bland wall. \*Available in Square\*

### Size:

100Dia  
350Dia  
450Dia  
1000Dia

### Colour:

Black, Black Terrazzo, White Terrazzo, Olive Glass, Cyan  
Black Terrazzo, White Terrazzo, Marble, Cyan, Olive  
Black, White, Turquoise  
White

## PRESENTATION



### LECTERN

**Features:** Professional and stylish black powder coated lectern with bonus LED light. Top is non perforated for logo or title.

**Size:** 445W x 450D x 1200H



### EPSON PROJECTOR EB-580

**Features:** Minimal shadows and glare - ideal for use with interactive whiteboards, Integrated wallmount included with extensive adjustability. Broad Connectivity - HDMI, USB Display, PC Free slideshows, optional wireless 16W Built-in Speaker with the power to fill a classroom



### EPSON PROJECTOR EB-X36

**Features:** Ensures stunning presentations with vibrant colour and sharp detail, easy set up with automatic vertical keystone correction. HDMI Connectivity delivers digital video and audio with just one cable, Optional Wireless connection to your laptop, smartphone and tablet.



### MOBILE MEDIA UNIT

**Features:** Practical and contemporary mobile multi-media unit, designed with hidden shelving and a back slimline door to hide wiring. This unit is strong and sturdy made to be moved around safely.

**Size:** 795W x 695D x 1720H



### COMBO JECTOR STAND

**Features:** Height adjustable double projector stand with locking castors and slip prevention lip on shelf. Available in Silver-grey powder-coat.

**Size:** 600W x 545D x 810-1200H



### JECTOR STAND

**Features:** Height adjustable single projector stand with locking castors and slip prevention lip on shelf. Available in Silver-grey powder-coat.

**Size:** 600Dia x 810-1200H



### JECTOR SCREEN

**Features:** Available in manual or electric. High definition black borders. Non curl and mildew resistant - screen will remain straight. White all metal housing.

Size:	Manual:	1520W x 1520H	1780W x 1780H	2130W x 2130H	2440W x 1850
Electric:	1830W x 7830H	2000W x 2000H	2440W x 1830H		



### JECTOR TRIPOD

**Features:** Tripod projection screen with high quality matte white PVC screen. High definition black borders. Non curl and mildew resistant. Black tubular screen housing with sturdy black metal stand. Keystone adjustment and easy to use locking brackets.

**Size:** 1780W x 1780H 2400W x 1800H

## PARTITIONS & ACOUSTICS



Free-Standing Partition

Our partitions come in a range of colours, shapes and sizes. We advise you inquire with a D.I Representative as we make to order.

HERE ARE SOME PARTITION OPTIONS WE HAVE AVAILABLE;

- Fixed
- Free-standing
- Mobile
- Desk
- Hygiene
- Acoustic



Acoustic Divider & Board



Desk Partitions & Acoustic Paneling

We have a range of acoustic options for classrooms to break out spaces.

Acoustic paneling are made to reduce sound in space by breaking down sound waves in a space and trapping them inside the acoustic lining of our products

HERE ARE SOME PARTITION OPTIONS WE HAVE AVAILABLE;

- Boards
- Tiles
- Partitions



### CY-DESK

Features:

Limit distraction and fatigue with the Cy-desk. A fun approach to learning and working. Users will naturally cycle instead of fidgeting with pens or walking away from the desk.

Size:

Contact a D.I Representative.



### BONSAI

Features:

Includes; dual backrests, rounded seat, foot-board and foot-rest together with the two flexible tabletops. There is plenty of space for a laptop or tablet PC, mobile phone and coffee cup while being a super ergonomic compact work space.

\*Available in Black, Forest, Jade, Navy, Red, Orange\*

Size:

890W x 630H



## OOL

### Features:

Ready, Set? Go. The Ool is the ultimate perching stool for active movement. It rocks, swings, embraces with its anti-slip base and extra wide seat.

\*Available in Black, White & Red\*

### Size:

360W x 240D x 530 - 760H



## ZOOL

### Features:

Zool is ideal for a sit/stand work environment with a higher seat that allows for restful perching.

\*Available in Black\*

### Size:

330Dia x 595 - 840H



## BEAN BAG

### Features:

A unique custom blend of high quality foams. This unique filling outperforms regular polystyrene beanbags in terms of comfort and durability. Ideal for hospitality, education and WorkCafé.

\*Optional shapes, sizes & colours available\*

### Size:

1800W x 1200D



## WHALE

### Features:

Whale is a multi functional piece of furniture and a fun addition to any space. The whale works as a chair with a comfortable back rest or turn around and use the tail as a work station.

\*Available without tail & colour options available\*

### Size:

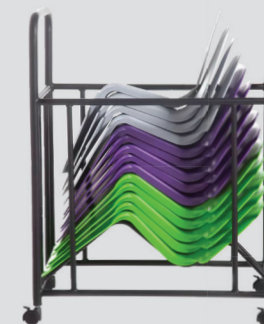
300W x 450H

## MI REST

MI Rest is a solution for creating flexible workspaces in the educational system. Students can rest books, writing supplies, iPads or laptops on the workspace. Featuring a non-slip top and base to keep the surface in place.

Students can take notes and work anywhere, any time. MI Rest is a one piece design that is light weight, portable and stackable making it perfect for storage.

The MI Rest comes in a variety of vibrant colours to brighten up classrooms.



### Colour Range:

Oyster Grey, Opal Light blue, Capri Blue, Melon Rush, Juice Green, Moon Purple

### Size:

660W x 570D x 400H  
1.5kg







DI OFFICE DESIGN

Phone: 03 9372 2777

Email: [sales@dioffice.com.au](mailto:sales@dioffice.com.au)

Address: 39 Stubbs Street, Kensington VIC 3031

[www.diofficedesign.com.au](http://www.diofficedesign.com.au)